

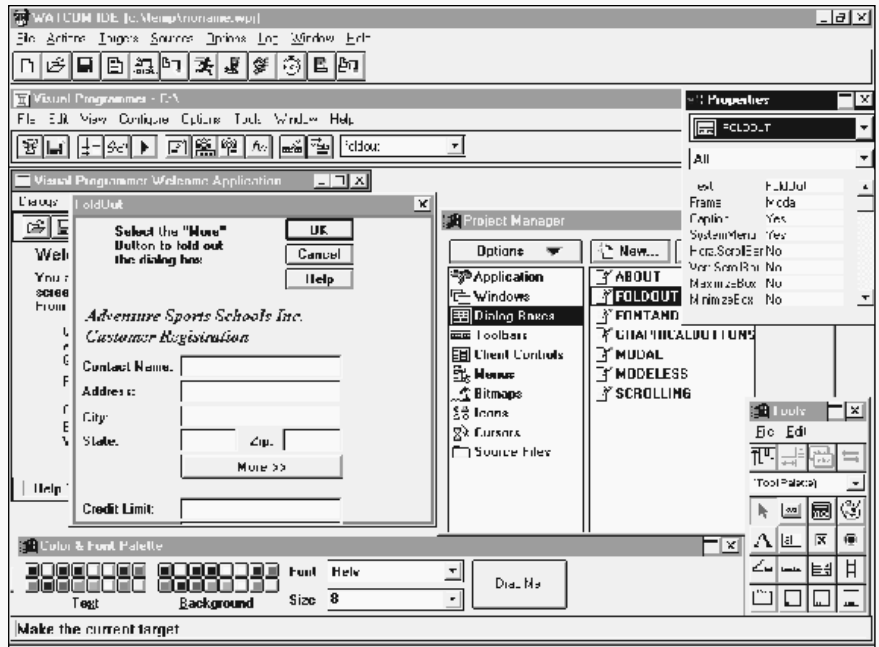
Watcom C/C++ 10.5

- Visual Programmer by Blue Sky Software Allows You to Visually Create 16- and 32-Bit Windows Applications
- Integrated Development Environment Hosted on Windows* 95, Windows NT*, Windows 3.x and OS/2*
- Comprehensive Suite of Multi-Platform Development Tools Including Debugger, Browser, Profiler and More
- Both 16- and 32-Bit C and C++ Compilers, Faster Compile Times With Pre-compiled Headers
- C++ Supports Templates and Exception Handling

Watcom C/C++ accelerates the development of high-performance, multi-platform 16- and 32-bit applications. Watcom C/C++ delivers productivity and performance, combining an integrated development environment (IDE) and comprehensive set of tools with our state-of-the-art compiler technology. In a single package, Watcom C/C++ provides a comprehensive development environment with the tools, SDKs and libraries you need to create powerful 16- and 32-bit applications for popular PC platforms.

Multiple Platforms In A Single Package

Watcom C/C++ supports a wide range of host and target platforms including Windows 95, Windows NT, OS/2 Warp, and extended DOS. This impressive platform support is amplified by the powerful cross-platform capabilities of the IDE and tools, which enable building applications for a wide range of target environments from any of the host systems. For example, from Windows NT you can build and debug Windows 3.1, Win32s, 16-bit DOS, and 32-bit DOS applications, in addition to Windows NT applications. This extensive cross-platform support helps you to exploit the capabilities of your host platform.



High Performance

Watcom's advanced compiler technology generates fast, tight code, optimizing your application's performance. Superscalar optimization strategy uses "riscification" and instruction scheduling to deliver optimum performance on 486 and Pentium® processors.

"(Watcom C/C++) delivered the fastest executables we saw in this roundup." PC Magazine, April 11, 1995

HOST SYSTEMS SUPPORTED:

Windows NT (IDE and Command-line), Windows 95 (IDE and Command-line), Windows 3.x (IDE), OS/2 Warp (IDE and Command-line), OS/2 2.x (IDE and Command-line), DOS (Command-line)

PROCESSORS SUPPORTED:

Intel386™ CX/EX/SX/SXSA/DX, Intel486™ SX, IntelDX2™, and IntelDX4™ Processors

TARGET PLATFORMS SUPPORTED:

16-bit: DOS, Windows 3.x, OS/2 1.x
32-bit: Windows NT, Windows 95, Win32s, OS/2 2.x, OS/2 Warp, 32-bit

Windows 3.x, Extended DOS, Novell NLM, Embedded Systems

ORDERING INFORMATION:

Please contact Watcom or your local reseller. Watcom C/C++ is backed by a 60-day money-back guarantee.

AVAILABILITY:

Now

CONTACT:

Watcom International Corp.
 415 Phillip Street
 Waterloo, Ontario Canada N2L 3X2
 Phone: (800) 265-4555
 (in North America) or
 (519) 886-3700
 FAX: (519) 747-4971
 e-mail: sales@watcom.on.ca
 WWW: www.watcom.com

Powersoft
 Watcom Products Division